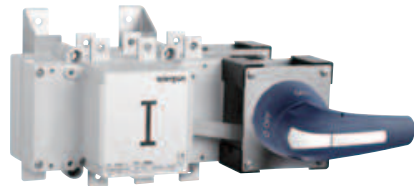
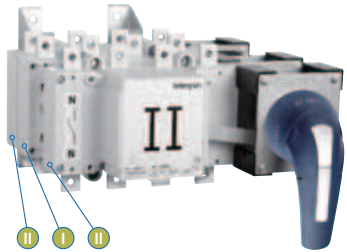


S5000 | 6P和8P开关 - 选型指南 6P & 8P switches - Selection guide

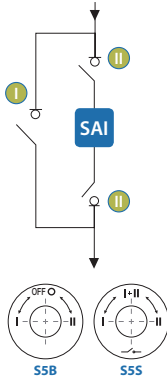


安培 Amps (Ith)	规格 Size	系列 Series	连接 Connection	开关 O-I S5000 On-Off switch S5000		直接手柄 Direct handle	
				6P 型号 Code	8P 型号 Code	蓝色 Blue 型号 Code	蓝色 Blue 型号 Code
125	0	S5M		S5M01256P50	S5M01258P50	DS-SI01	
160	0	S5M		S5M01606P50	S5M01608P50	DS-SI01	
200	0	S5M		S5M02006P50	S5M02008P50	DS-SI01	
250	1	S5M		S5M02506PR0	S5M02508PR0	DS-LI12	
315	1	S5M		S5M03156PR0	S5M03158PR0	DS-LI12	
400	1	S5M		S5M04006PC0	S5M04008PC0	DS-LI12	
500	2	S5M		S5M05006PR0	S5M05008PR0	DS-LI22	
630	2	S5M		S5M06306PR0	S5M06308PR0	DS-LI22	
800	3	S5M		S5M08006PR0	S5M08008PR0	DS-LI41	
1000 C	3	S5M		S5M10006PC0	S5M10008PC0	DS-LI41	
1250	4	S5M		S5M12506P50	S5M12508P50	DS-LI41	
1600	4	S5M		S5M16006P50	S5M16008P50	DS-LI41	
1800	4	S5M		S5M18006P50	S5M18008P50	DS-LI41	

S5000 | 旁路转换开关 - 选型指南 Bypass changeover switches - Selection guide



安培 Amps (Ith)	规格 Size	系列 Series	连接 Connection	开关 O-I S5000 Bypass c/o switch I-O-II S5000		直接手柄 Direct handle	
				3P 型号 Code	3P + N ^{(*)1} 型号 Code	蓝色 Blue 型号 Code	蓝色 Blue 型号 Code
125	0	S5B		S5B01253P50	S5B01253N50	D5LSI02	
160	0	S5B		S5B01603P50	S5B01603N50	D5LSI02	
200	0	S5B		S5B02003P50	S5B02003N50	D5LSI02	
250	1	S5B		S5B02503PR0	S5B02503NR0	D5LLI12	
315	1	S5B		S5B03153PR0	S5B03153NR0	D5LLI12	
400	1	S5B		S5B04003PC0	S5B04003NC0	D5LLI12	
500	2	S5B		S5B05003PR0	S5B05003NR0	D5LLI22	
630	2	S5B		S5B06303PR0	S5B06303NR0	D5LLI22	
800	3	S5B		S5B08003PR0	S5B08003NR0	D5LLI32	
1000 C	3	S5B		S5B10003PC0	S5B10003NC0	D5LLI32	
1250	4	S5B		S5B12503P50	S5B12503N50	D5LLI32	
1600	4	S5B		S5B16003P50	S5B16003N50	D5LLI32	
1800	4	S5B		S5B18003P50	S5B18003N50	D5LLI32	



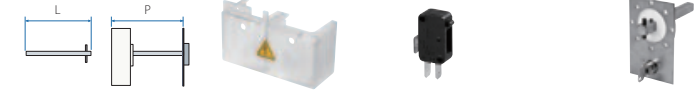
重叠触点 (S5S系列), 按要提供。

Overlapped contacts (S5S series), under request.

• 尺寸, 参见第32 - 43页 / Dimensions, see page 32 - 43
• 技术参数, 参见第58页 / Technical information, see page 58



外部手柄 External handle				接线端护板 ^{(*)2} Terminal shrouds ^{(*)2}		辅助触点 ^{(*)3} Auxiliary contacts ^{(*)3}		安全按键锁定装置 ^{(*)4} Safety key lock device ^{(*)4}	
蓝色 Blue 型号 Code	红色 - 黄色 Red - Yellow 型号 Code	L (mm)	P (mm)	型号 Code	型号 Code	1NA+1NC 1NO+1NC 型号 Code	2NA+2NC 2NO+2NC 型号 Code	单 Simple 型号 Code	双 Double 型号 Code
DS-LA01	DS-LR01	177	155... 263	DS-CU01 ^{(*)5}	DS-AU11	DS-AU12	DS-CAB1	DS-CEB1	
DS-LA01	DS-LR01	177	155... 263	DS-CU01 ^{(*)5}	DS-AU11	DS-AU12	DS-CAB1	DS-CEB1	
DS-LA01	DS-LR01	177	155... 263	DS-CU01 ^{(*)5}	DS-AU11	DS-AU12	DS-CAB1	DS-CEB1	
DS-LA12	DS-LR12	227	288... 422	DS-CU11	DS-AU11	DS-AU12	DS-CB12	DS-CF11	
DS-LA12	DS-LR12	227	288... 422	DS-CU11	DS-AU11	DS-AU12	DS-CB12	DS-CF11	
DS-LA12	DS-LR12	227	288... 422	DS-CU12 ^{(*)5}	DS-AU11	DS-AU12	DS-CB21	DS-CF21	
DS-LA22	DS-LR22	239	325... 490	DS-CU21	DS-AU11	DS-AU12	DS-CB21	DS-CF21	
DS-LA22	DS-LR22	239	325... 490	DS-CU21	DS-AU11	DS-AU12	DS-CB21	DS-CF21	
DS-LA41	DS-LR41	239	408... 573	DS-CU31	DS-AU11	DS-AU12	DS-CB41	DS-CF41	
DS-LA41	DS-LR41	239	408... 573	DS-CU31	DS-AU11	DS-AU12	DS-CB41	DS-CF41	
DS-LA41	DS-LR41	239	408... 573	DS-CU41	DS-AU11	DS-AU12	DS-CB41	DS-CF41	
DS-LA41	DS-LR41	239	408... 573	DS-CU41	DS-AU11	DS-AU12	DS-CB41	DS-CF41	
DS-LA41	DS-LR41	239	408... 573	DS-CU41	DS-AU11	DS-AU12	DS-CB41	DS-CF41	



外部手柄 External handle				接线端护板 ^{(*)2} Terminal shrouds ^{(*)2}		辅助触点 ^{(*)3} Auxiliary contacts ^{(*)3}		安全按键锁定装置 ^{(*)4} Safety key lock device ^{(*)4}	
蓝色 Blue 型号 Code	型号 Code	L (mm)	P (mm)	型号 Code	型号 Code	1NA+1NC 1NO+1NC 型号 Code	2NA+2NC 2NO+2NC 型号 Code	单 Simple 型号 Code	双 Double 型号 Code
D5LLA01		177	221... 346	DS-CU01 ^{(*)5}	DS-AU11	DS-AU12	DS-CAB1	DS-CEB1	
D5LLA01		177	221... 346	DS-CU01 ^{(*)5}	DS-AU11	DS-AU12	DS-CAB1	DS-CEB1	
D5LLA01		177	221... 346	DS-CU01 ^{(*)5}	DS-AU11	DS-AU12	DS-CAB1	DS-CEB1	
D5LLA11		227	382... 516	DS-CU11	DS-AU11	DS-AU12	D5LCB21	D5LCF21	
D5LLA11		227	382... 516	DS-CU11	DS-AU11	DS-AU12	D5LCB21	D5LCF21	
D5LLA11		227	382... 516	DS-CU12 ^{(*)5}	DS-AU11	DS-AU12	D5LCB31	D5LCF31	
D5LLA21		239	448... 613	DS-CU21	DS-AU11	DS-AU12	D5LCB41	D5LCF41	
D5LLA21		239	448... 613	DS-CU21	DS-AU11	DS-AU12	D5LCB41	D5LCF41	
D5LLA31		239	480... 645	DS-CU31	DS-AU11	DS-AU12	D5LCB41	D5LCF41	
D5LLA31		239	480... 645	DS-CU31	DS-AU11	DS-AU12	D5LCB41	D5LCF41	
D5LLA31		239	572... 645	DS-CU41	DS-AU11	DS-AU12	D5LCB41	D5LCF41	
D5LLA31		239	572... 645	DS-CU41	DS-AU11	DS-AU12	D5LCB41	D5LCF41	

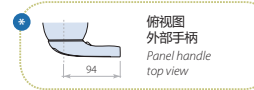
^{(*)1} 预切换中性极 (预跳 - 闭滞)。
^{(*)2} 250 Vac时, Ie = 16 A (电阻负载) 4 A (电感负载)。
^{(*)3} 手柄上的按键扳动到“OFF”位置, 即可锁定外部配电箱的手柄 (也可以按要要求在“ON”位置上锁定), 手柄锁定后方可拆除按键。
^{(*)4} 接线端保护。
^{(*)5} Advanced switched neutral (early make-late break).
^{(*)6} Protecting the front side, order one set for input and one set for output.
^{(*)7} Ie = 16A(resistive loads) 4A (inductive loads a 250 Vac).
^{(*)8} For external panel, lock the handle by means of a key in position "OFF" (under request, in "ON"), the key can only be removed with the handle locked.
^{(*)9} Terminal protection.

S5000 | 尺寸 / Dimensions (mm)

S5000 | 尺寸 / Dimensions (mm)

外部手柄和钻孔 / Panel handle and drilling

系列 Series	安培 Amps (Ith)	规格 Size	正视图 Front view	俯视图 Side view
S5M	125 160	0		
	200	0		
S5M	250 315	1		
	400			



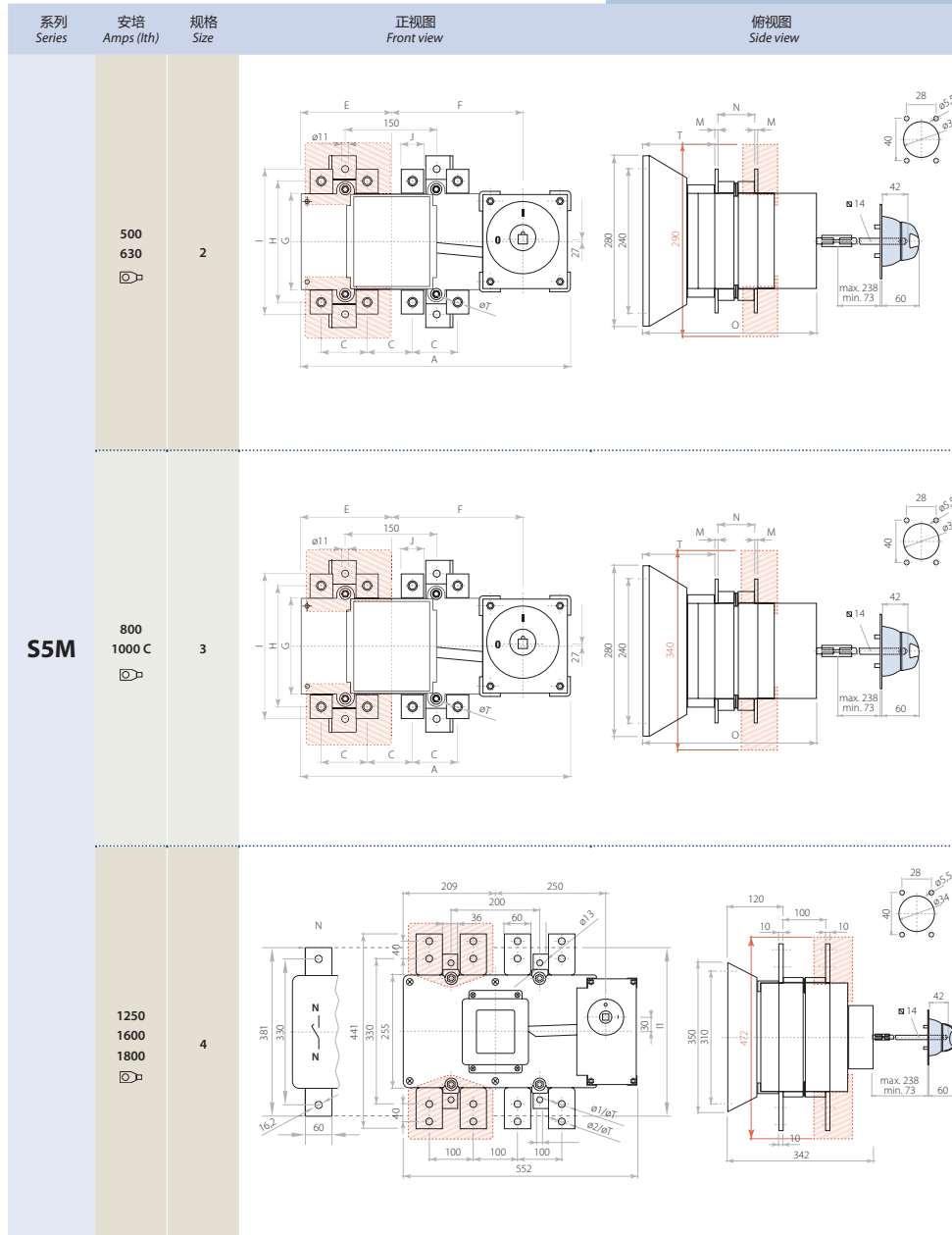
直接手柄 / Direct handle

俯视图 Top view	配电柜上为手柄和锁定装置开设的钻孔 Panel drilling for handle and keylock device		尺寸 (mm) Dimensions (mm)																
	单 / simple	双 / double																	
			<table border="1"> <thead> <tr> <th>A</th> <th>B</th> <th>ø</th> <th>T</th> </tr> </thead> <tbody> <tr> <td>125 A</td> <td>181</td> <td>192</td> <td>53</td> </tr> <tr> <td>160 A</td> <td>192</td> <td>53</td> <td>64</td> </tr> <tr> <td></td> <td></td> <td>10</td> <td>M8</td> </tr> </tbody> </table>	A	B	ø	T	125 A	181	192	53	160 A	192	53	64			10	M8
A	B	ø	T																
125 A	181	192	53																
160 A	192	53	64																
		10	M8																
			<table border="1"> <thead> <tr> <th>A</th> <th>B</th> <th>ø</th> <th>T</th> </tr> </thead> <tbody> <tr> <td>200 A</td> <td>181</td> <td>192</td> <td>53</td> </tr> <tr> <td></td> <td>64</td> <td>64</td> <td>10</td> </tr> <tr> <td></td> <td></td> <td></td> <td>M10</td> </tr> </tbody> </table>	A	B	ø	T	200 A	181	192	53		64	64	10				M10
A	B	ø	T																
200 A	181	192	53																
	64	64	10																
			M10																

S5000 | 尺寸 / Dimensions (mm)

S5000 | 尺寸 / Dimensions (mm)

外部手柄和钻孔 / Panel handle and drilling



直接手柄 / Direct handle

